

HELMÁNTICA DE CERRAJERÍA, S.L.

CORPORATE PRESENTATION



HELCESA is a company from Salamanca dedicated to the ***manufacture of tailor-made stainless-steel products***, with more than thirty-five years of experience in the metal sector.

Our main sectors are:

- ***FOOD INDUSTRY***
- ***CONSTRUCTION***
- ***DECORATION***
- ***HOSPITALITY AND RESTAURANTS***
- ***SUPERMARKETS***

LOCATION

Our facilities, with over 6000m2, are located in **SALAMANCA (Spain)** and the current distribution of our work centers is as follows:

■ ***CASTELLANOS DE MORISCOS.***

- Main Office
- Building 1, 2, 3, 4, y 5.
- Address: Polígono Industrial Castellanos.

■ ***GUIJUELO.***

- Delegation of Guijuelo
- Address: Polígono Agroalimentario de Guijuelo



PRODUCTIVE RESOURCES

- ***MECHANICAL.***

We have a wide variety of innovative machinery 100% used for the transformation of stainless steel.

- ***TECHNICAL.***

It support, specific software and other tools allow us to develop all our projects.

- ***LOGISTICAL.***

Our own fleet of cargo and commercial vehicles provide us with great flexibility in deliveries as well as in technical and commercial assistance.

- ***HUMAN CAPITAL.***

The current staff, made up of over 80 people, constitutes a team of highly qualified professionals.

COMMERCIAL COVERAGE

☐ DOMESTIC MARKET

Our commercial team covers the entire Spanish territory, trying to reach all areas that present a need.

- ❖ *Commercial Director - Jose Luís Díaz*
- ❖ Angel A. León (*East and Northeast Zone*)
- ❖ Evelio Almendra (*Central and Northwest Zone*)
- ❖ Technical-Commercial Team (*Province and ongoing projects*)

☐ FOREIGN MARKET

Currently, our international range is fundamentally European. We are always open to considering projects across other continents.

(Commercial Dtor. Jose Luis – Technical Dtor. Jose María – Export Manager. Ángel Peralta)

TECHNICAL ADVICE

☐ TECHNICAL SALES TEAM

Our commercial technicians are in charge of examining the projects in order to present the client with the best solution for their needs.

- ❖ *Technical Director – Jose María G^a Peralta*
- ❖ *Jose Miguel Pino (Supermarkets - Decoration)*
- ❖ *Eduardo Fernández (Food Industry)*
- ❖ *Evelio Almendra (Construction)*
- ❖ *Jose María Sánchez (Hospitality and Restaurants)*

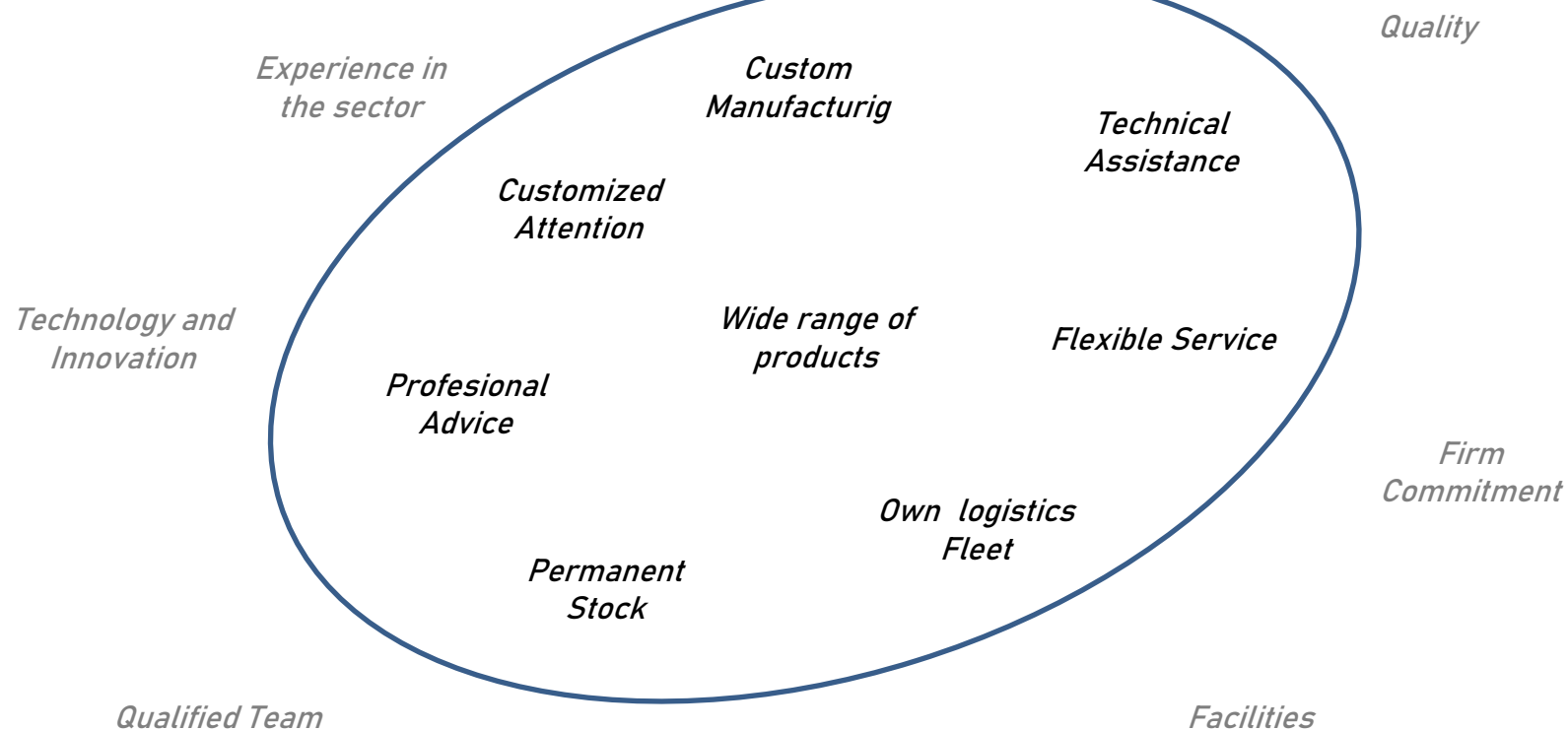
Classified by specialities but at the same time multipurpose and qualified for any of our business areas.

☐ ENGINEERING DEPARTMENT

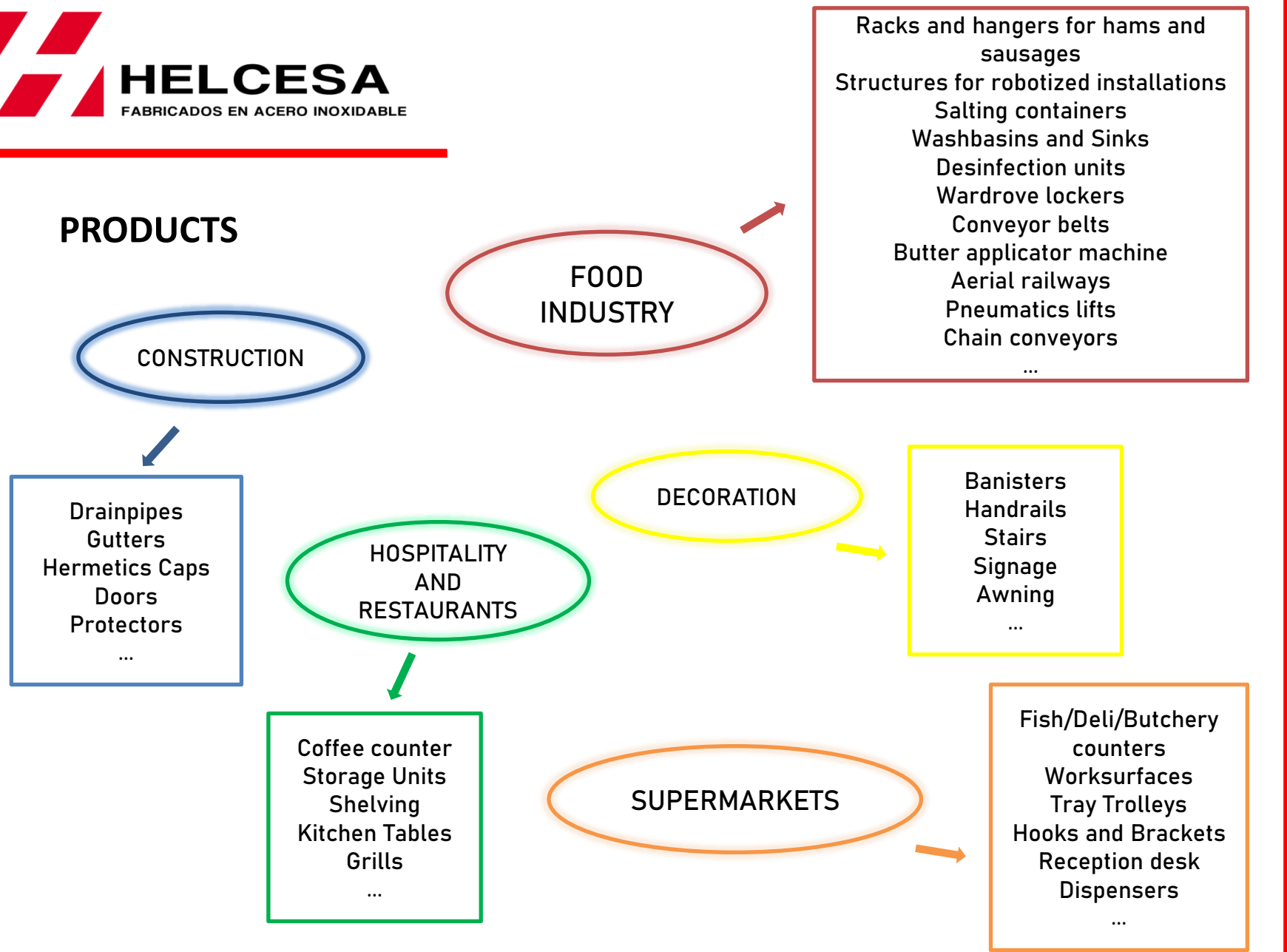
We have an office dedicated to the most complex projects. The work we carry out here is mainly aimed at the food industry—more specifically at the meat sector.

- ❖ *Iván / J. Pedro - Department Managers*

SERVICIOS



PRODUCTS



FOOD INDUSTRY Equipment



■ Racks for sausages



■ Hangers for sausages



■ Hangers for sausages



■ Salting containers



■ Bacon containers



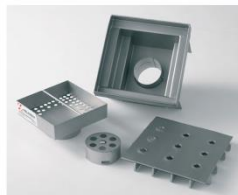
■ Pyramid trolley for ribs



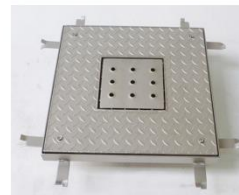
HELCESA
FABRICADOS EN ACERO INOXIDABLE



CONSTRUCTION



■ Drainpipes



■ Hermetics Caps



■ Protectors



Drainpipes



■ Gutters



■ Gutters



■ Doors with
monoblock
profile



■ Doors with waterproof
profile



HELCESA
FABRICADOS EN ACERO INOXIDABLE

DECORATION



■ Stainless steel and glass banisters



■ Handrails



■ Elevator liners



■ Stairs



Stainless steel banisters



■ Shop windows



■ Awning



■ Shields and decorative figures



■ Signage



HELCESA
FABRICADOS EN ACERO INOXIDABLE



HOSPITALITY AND RESTAURANTS



■ Stainless bar



■ Extraction hood



■ Cup hanger



Portuguese grill



■ Coffee counter,
and shelving



■ Storage Units



■ Sink with doors



■ Table with shelves



■ Counter kitchen



■ Coffee counter

SUPERMARKETS



■ Fish counter



■ Cutting tables of ham



■ Carros de bandejas



■ Washbasins



■ Ozone disinfection cabinet for knives



■ ovens trolleys



■ Worksurfacers



■ Storage unit



■ Shopping cart station

REFERENCE CUSTOMER PORTFOLIO



During our 40 years of experience, we have always had the pleasure of working for the most representative companies in the food industry.

Today, we have a customer base of more than 6,000 companies.

Thanks to this, our revenue has followed an upward trend over the last few years, allowing us to reach 10.000.000 €

CONTACT WITH US.

❑ COMMERCIAL Department:

- ÁNGEL PERALTA - +34 674 61 28 13 - a.peralta@helcesa.com
- JOSE LUIS DÍAZ - +34 629 43 72 78 - jldiaz@helcesa.com
- ÁNGEL ANTONIO LEÓN - +34 639 40 22 67 - aleon@helcesa.com

❑ TECHNICAL:

- JOSE M^a GARCÍA PERALTA - +34 606 30 20 97 - jmgperalta@helcesa.com
- JOSE MIGUEL PINO - +34 679 41 91 79 - jmpino@helcesa.com
- IVÁN BLANCO - +34 656 25 30 24 - iblanco@helcesa.com

❑ CENTRAL OFFICE

- TELEPHONE: +34 923 36 14 09
- FAX: +34 923 36 14 10
- E-MAIL: info@helcesa.com

WEBSITE

www.helcesa.com

TRUST US...

40 AÑOS



AL SERVICIO DE LA INDUSTRIA ALIMENTARIA